

# PC120

## FLATWORK INDUSTRIAL IRONER

PC12030  
PC12033  
PC12035

**PRODUCTIVITY** – Delivering a superior finish, the PC120 offers advanced productivity, speeds up to 164 ft./min., and the ability to quickly iron a variety of items and dimensions.



### PRODUCT / FEATURES

#### QUALITY

- A mirror-polished surface, advanced electronics and unrivaled programmability ensure a flawless finish and superior results.

#### EFFICIENCY

- Separate motors for each roll, the bed's high-heat transfer, and controlled ironing pressure are key to maximum energy efficiency.

#### DURABILITY

- Industrial construction resists mechanical stresses and thermal expansion.
- Engineered for years of constant and trouble-free use, PC120 Ironers are backed by a 7/5/3-year IndustrialCare warranty.

#### MAINTENANCE

- The ironer's components are highly accessible, making maintenance tasks easier and shortening work time.
- A smart design reduces wear on consumables, such as the ironer's padding, which lessens maintenance.

#### HEAT CAPTURE TECHNOLOGY

- Optional thermal insulation panels cover the ironer for significant gains in efficiency, productivity and a comfortable working environment. Heat stays inside the ironer where it belongs.

#### LONGER LIFE

- Constructed for years of use, PC-120 Ironers help ensure uninterrupted operation and a maximum return on investment.

#### INTELI CONTROL FLEXIBILITY

- The Inteli Control brings total control over every ironing parameter and offers up to 100 custom ironing programs.
- The touch-screen control and intuitive system of icons work together for simple operation.

#### RIGID CHEST TECHNOLOGY

- The PC-120 features a rigid chest with a mirror-polished surface and large flow channels for consistent and even heat circulation – ensuring a flawless finish.
- The bridges between the beds are heated to create a larger ironing surface area, achieving uniform temperature without causing damaging tension against linen.
- The S-COIL design of the bed assures uniform heating of the entire ironing surface and eliminates cold areas
- A pressure gradient with maximum concentration of diametrical pressure delivers high-quality ironing.
- A floating, self-aligning system allows the ironer to adjust to thermal expansions and mechanical stresses, while maintain a constant pressure distribution over time.

#### DIRECT TRANSMISSION

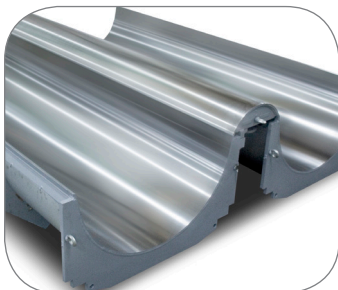
- Gear motors transmit power to each roll independently and are electronically controlled through encoders and inverters that allow adjustment of roll speed and speed between rolls.

#### PLUG & PLAY; EASY INSTALLATION

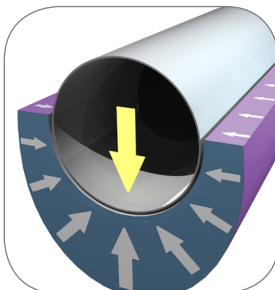
- Ironer design allows for easy delivery and installation.
- Quick start-up reduces installation time and labor.

#### GAS IRONER PROVIDES MAXIMUM EFFICIENCY

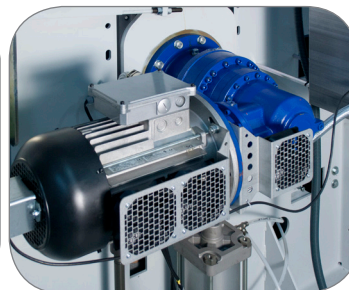
- The natural gas model boasts an industry-leading 93 percent efficiency!
- A spacious combustion chamber ensures the flame never touches pipes, to avoid cracking.
- A multi-piping system ensures thermal fluid circulates through four sets of piping for a more expansive heating surface area – improving efficiency.
- Steam circulates in three ways (flame, between pipes, return). This takes advantage of the temperature of the steam, which, through exchange, provides better heating efficiency.



RIGID TECHNOLOGY



CONSTANT PRESSURE & UNIFORM TEMPERATURE



DIRECT TRANSMISSION



HIGHLY EFFICIENT

# PC120

## FLATWORK INDUSTRIAL IRONER

**ARCHITECTURAL/MECHANICAL**  
PRODUCT SPECIFICATIONS

### PRODUCT SPECS

		PC 12030/1	PC 12033/1	PC 12035/1	PC 12030/2	PC 12033/2	PC 12035/2	PC 12030/3	PC 12033/3	PC 12035/3
Cylinder Nr.		1			2			3		
Heating surface	m² (sq.ft.)	118	66	70	140	154	164	220	241	256
Ø Cylinder	mm (in.)	47.2								
Cylinder length	mm (in.)	118	130	138	118	130	138	118	130	138
Speed	m/min (ft/min)	16-164								
Air flow V - AT - G	m²/h (c.f.m)	971			1,942			2,943		
Fumes flow - G	m²/h (c.f.m)	390			780					
Heating power AT	kW (BTU/h)	791.6	870	921.2	1381.9	1518.4	1603.7	1859.6	2047.2	2170.1
Heating power G	kW (BTU/h)	853.0			1706.0					
Steam flow	kg/h (lbs/h)	933	1025	1087	1620	1790	1874	2194	2416	2562
Hot oil flow	l/min (Usgal/min)	207	227	240	361	396	419	486	535	567
Motors power V - AT (50 Hz)	kW	0,9 / 1,1 / 11			0,9 / 2x1,1 / 2x11			0,9 / 3x1,1 / 3x11		
Motors power G (50 Hz)	kW	0,9 / 1,1 / 11 / 4,6			0,9 / 2x1,1 / 2x11 / 11,6			0,9 / 3x1,1 3x11 /11,6		
Ø Steam exhaust V - AT - G	mm (in.)	9.8								
Ø Fumes exhaust G	mm (in.)	7.9			9.8					
Ø Steam Ø Return	inch	1 ½" 1 ½"			2" 1 ½"					
Ø Hot oil Ø Return	inch	3" 3"								
Ø Compressed Air	inch	½"								
Net weight V - AT	lbs	11343	12677	13448	22520	25067	26643	33698	37457	39838
Net weight G	lbs	14264	15498	16314	27245	29685	31301	37.30	41	43.45
Height V- AT <b>H</b>	mm (in.)	72.8								
Height G <b>H</b>	mm (in.)	105.7								
Width <b>L</b>	mm (in.)	171.4	183.2	191.1	171.4	183.2	191.1	171.4	183.2	191.1
Depth V - AT <b>P</b>	mm (in.)	108.5			176.2			243,8		
Depth G <b>P</b>	mm (in.)	118.4			190.8			258,4		

\* Specifications subject to change without notice or obligation. Contact Girbau Industrial at (800) 256-1073 for dimensions not shown or for clarification.

